

KEY IMPROVEMENTS INCLUDE...

- INFRASTRUCTURE UPGRADES:**
Installation of new street lighting foundations and conduits, removal of outdated light pole foundations, and improvements to crosswalk facilities.
- DRAINAGE AND SIDEWALK IMPROVEMENTS:**
Adjustments to storm drain culverts on North and South Second Street, and the complete overhaul of sidewalks near the middle school, including new street trees and boxes, irrigation systems, and amenities like bus shelters and benches.
- UTILITY ENHANCEMENTS:**
Installation of new fire lines and hydrants along key blocks, underground electrical conduits for future utility projects, and upgrades to electric service boxes for street lighting.
- ROAD SURFACE REPLACEMENTS:**
Removal and replacement of road surfaces on streets such as Hot Springs Boulevard, Lewis Street, South Seventh Street, South Eighth Street, and South Fifth Street, ensuring improved durability and aesthetics.
- SANITARY AND GEOTHERMAL SYSTEMS:**
Replacement of up to 40 sanitary sewer service lines and installation of new geothermal supply and return lines to support sustainable energy initiatives.
- ADDITIONAL ENHANCEMENTS:**
Procurement of new street light poles and fixtures, creation of temporary gravel parking areas, and installation of new signage and poles.

US 160

RECONSTRUCTION & DOWNTOWN REVITALIZATION

MODERNIZE MAIN STREET • IMPROVE PEDESTRIAN ACCESSIBILITY • UPGRADE ESSENTIAL PUBLIC UTILITIES

SHEET INDEX:

- SHEET 01: US 160 PLAN RENDERINGS - 10TH STREET TO 7TH STREET
- SHEET 02: US 160 PLAN RENDERINGS - 6TH STREET TO 5TH STREET
- SHEET 03: US 160 PLAN RENDERINGS - HISTORIC 4TH STREET
- SHEET 04: US 160 PLAN RENDERINGS - 3RD STREET TO 1ST STREET

US 160 RECONSTRUCTION & DOWNTOWN REVITALIZATION



TO VIEW VIDEO ANIMATIONS & PLAN ILLUSTRATIONS OF THE OVERALL DESIGN:

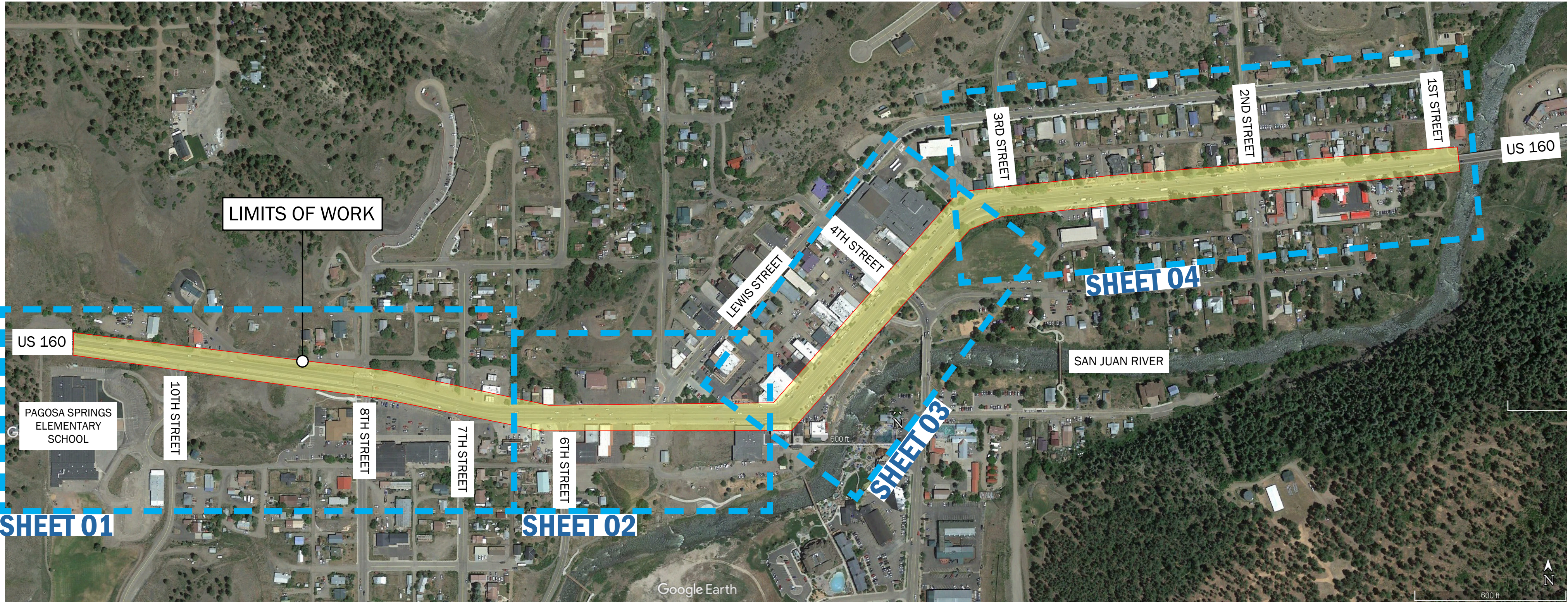
COMING SOON - 2026

SCAN HERE

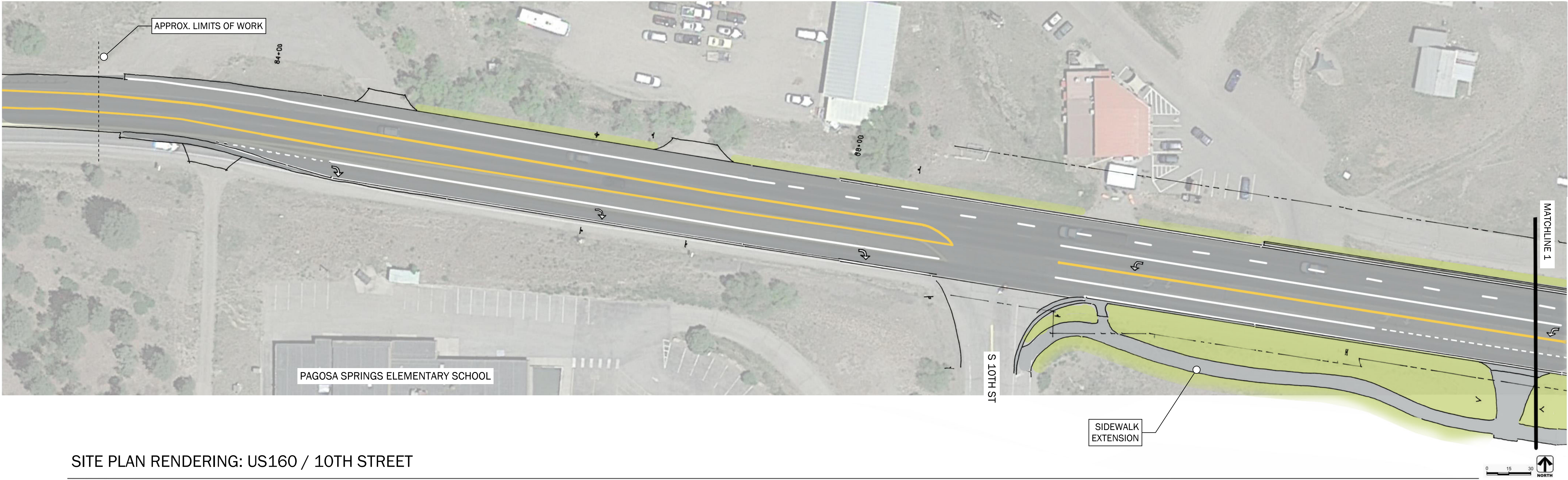


MODERNIZE MAIN STREET • IMPROVE PEDESTRIAN ACCESSIBILITY • UPGRADE ESSENTIAL PUBLIC UTILITIES

PROJECT LOCATION / KEY MAP

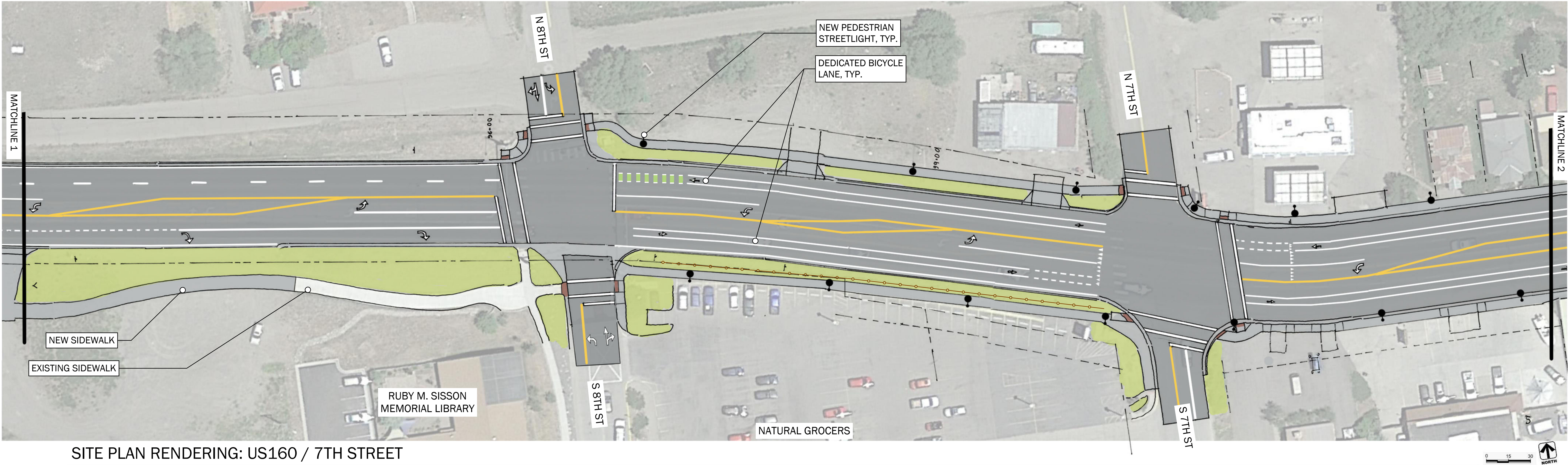


SCALE: N.T.S.



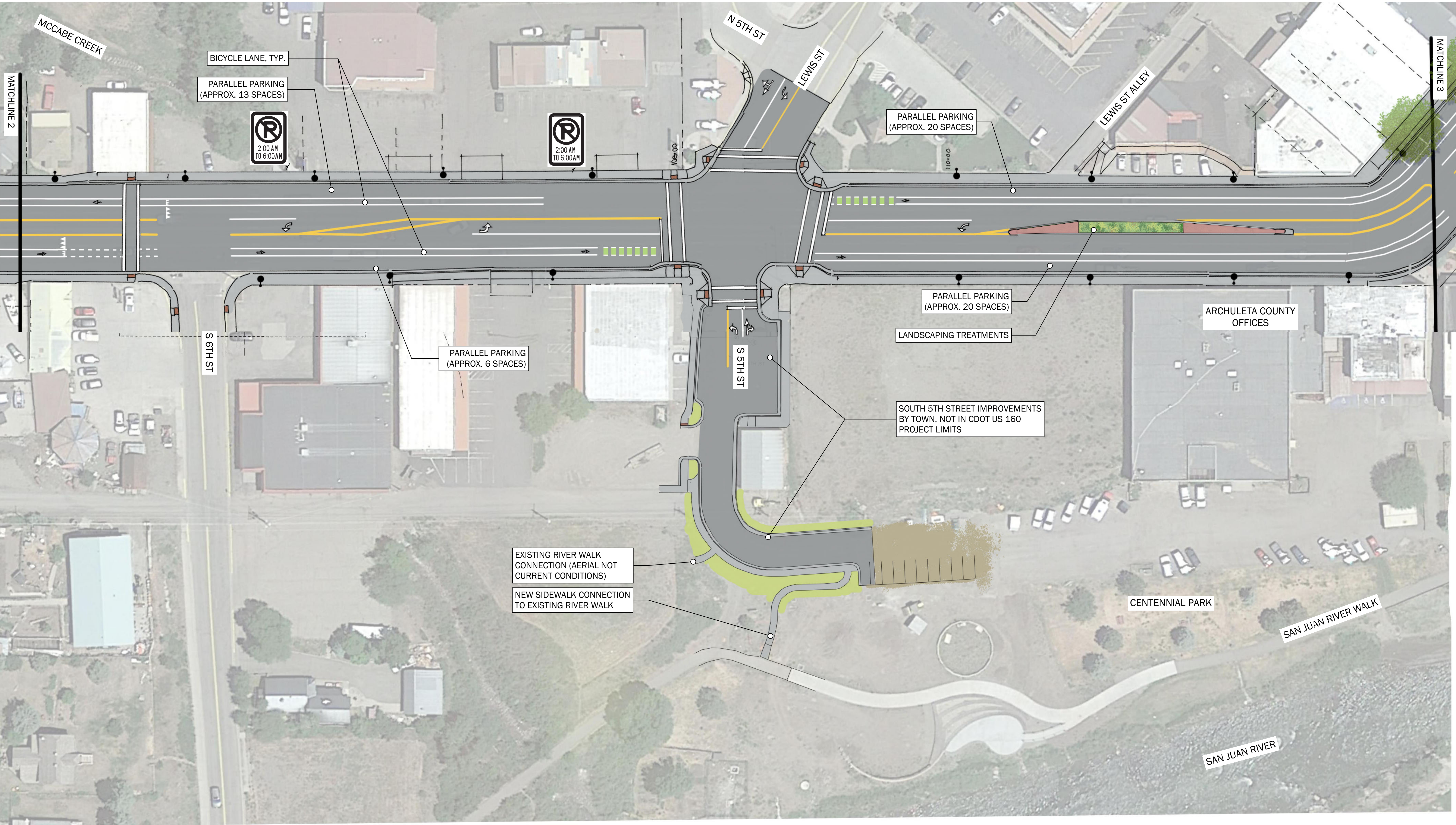
SITE PLAN RENDERING: US160 / 10TH STREET

SCALE: 1"=30'-0"



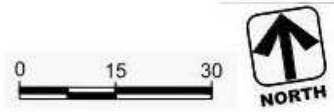
SITE PLAN RENDERING: US160 / 7TH STREET

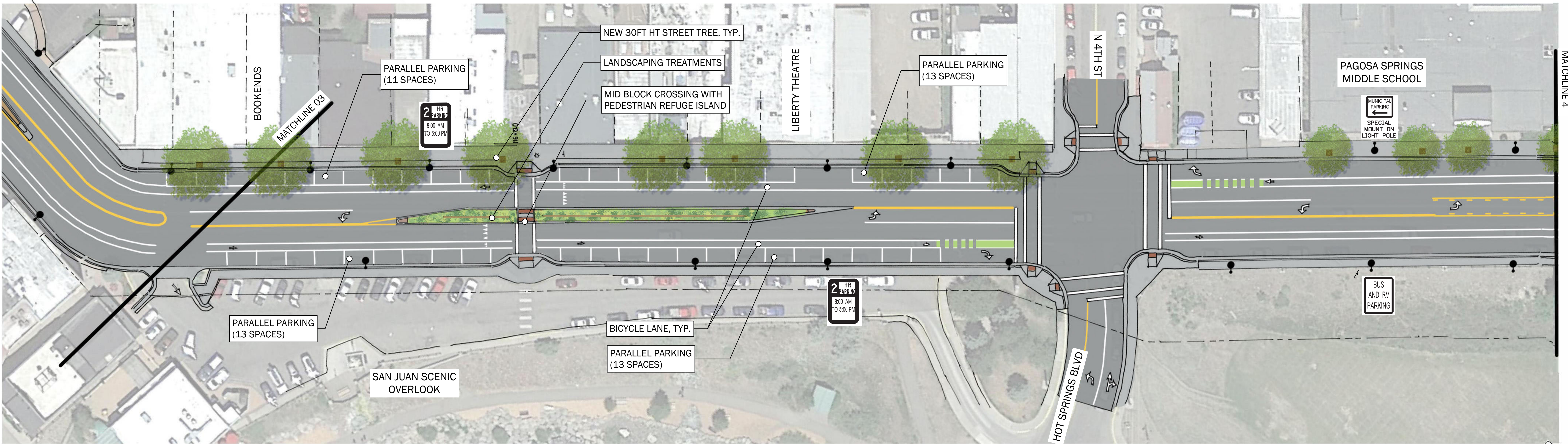
SCALE: 1"=30'-0"



SITE PLAN RENDERING: US160 / 6TH STREET - 5TH STREET

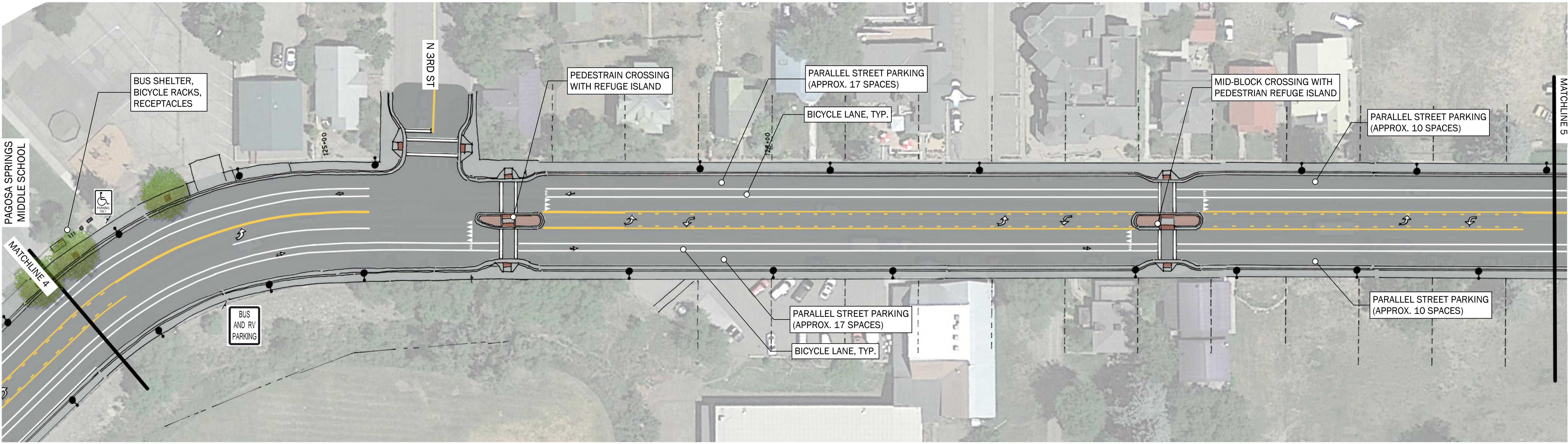
SCALE: 1"=30'-0"





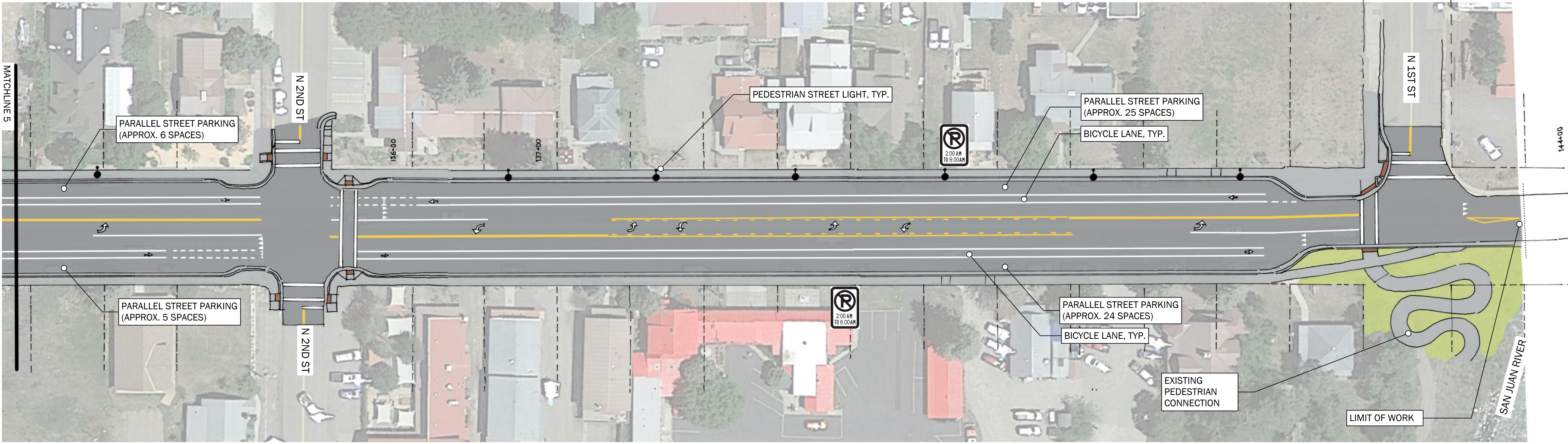
SITE PLAN RENDERING: US160 / 4TH STREET

SCALE: 1"=30'-0"



SITE PLAN RENDERING: US160 / 3RD STREET

SCALE: 1"=30'-0"



SITE PLAN RENDERING: US160 / 2ND - 1ST STREET

SCALE: 1"=30'-0"